

Clera - y dathliad!



1996 - 2006

Cyngerdd dathlu pen blwydd Clera

Cymdeithas Offerynnau Traddodiadol Cymru/
celebrating the 10th anniversary of the
Society for the Traditional Instruments of Wales

10th Oed

GALERI, CAERNARFON

Nos Wener Tachwedd 24 2006 am 8.00 yh
Friday November 24 2006 at 8.00 pm

Gwesteion Arbennig/Special Guests

Meredydd Evans a Phyllis Kinney

Noddwyd y rhaglen hon gan

cwmni da



SPONSOR GYMRYDOL
CYNGOR Celfyddydau Cymru
THE ARTS COUNCIL OF WALES
SUPPORTING CREATIVITY

Clera - y dechreuadau ... (atgof personol Stephen Rees)

Ym mis Medi 1994 fe ges i wahoddiad gan y cynhyrhydd-gyfarwyddwr Gwyndaf Roberts (*Ar Log*) – i gyflwyno eitem ar y rhaglen 'Dim Ond Celf' ar S4C. Y pwnc oedd yr adfywiad gwerin sylweddol yng Ngogledd Ddwyrain Lloegr: Euthum i Newcastle i gyfweled Alistair Anderson (cyfarwyddwr y mudiad *Folkworks*) a'r pibydd enwog Kathryn Tickell.

Gadawodd yr ymweliad gryn argraff arnaf, ac ar ôl dychwelyd i Gymru, rhennais fy mrwdfrydedd gyda Wyn Thomas, cyd-weithiwr yn Adran Gerdd Prifysgol Cymru Bangor: Soniais wrtho am lwyddiant *Folkworks*, ac am eu 'Workouts', sef gweithdai yn canolbwyntio ar y traddodiad offerynnol, pwyslais oedd yn gymharol brin yng Nghymru ar y pryd. Trefnodd Wyn y 'Gweithdy Gwerin' cyntaf ym mis Ebrill 1995, gyda nawdd gan Adran Ddysgu Gydol Oes PCB. Tiwtoriaid y gweithdy cyntaf oedd Robin Huw Bowen (telyn deires), Andy McLauchlin (ffliwt/chwiban), Stephen Rees a Huw Roberts (ffidil) a Llio Rhydderch (telyn bedal). Cynhaliwyd nifer o gyfarfodydd i drafod sefydlu mudiad cenedlaethol i hybu'r traddodiad offerynnol. Trefnwyd gweithdy gwerin arall yn y Bontfaen yng Ngwanwyn 1996, ac fe lansiodd y Gymdeithas yn swyddogol yn Eisteddfod Genedlaethol Llandeilo fis Awst 1996.

Yn ogystal â'r tiwtoriaid, gweithiodd sawl un arall yn galed iawn i sicrhau llwyddiant y blynyddoedd cynnar: Wyn Thomas, trefnydd y gweithdai cynnar ac ysgrifennydd cyntaf y gymdeithas; y delynores Elonwy Wright (ein cynrychiolydd yn y de-ddwyrain); a llywydd y Gymdeithas, y ddiweddar Frances Môn Jones, a'n cefnogodd yn frwd ar bwyllgor Ffederasiwn Cerddoriaeth Amatur Cymru.

How it all started ... (by Stephen Rees)

In September 1994 I was invited by the producer-director Gwyndaf Roberts (*Ar Log*) to present an item on the 'Dim Ond Celf' arts programme on S4C. The subject was the folk revival in the North East of England. I went to Newcastle to interview Alistair Anderson (director of *Folkworks*) and the well known piper Kathryn Tickell.

That visit impressed me greatly and on my return to Wales I shared my enthusiasm with Wyn Thomas, a colleague in the Music Department of University of Wales, Bangor. I described the success of *Folkworks* and their 'Workouts', workshops which focused on the instrumental tradition, an emphasis that was quite rare in Wales. Wyn organised the first 'Folk Workshop' in April 1995, with support from the University's Lifelong Learning Department. The tutors on that first workshop were Robin Huw Bowen (triple harp), Andy McLauchlin (flute/whistle), Stephen Rees and Huw Roberts (fiddle) and Llio Rhydderch (pedal harp). A number of meetings were held to discuss establishing a national movement to promote the instrumental tradition. Another folk workshop was organised in Cowbridge in the Spring of 1996 and the society was launched officially in the Llandeilo Eisteddfod in August 1996.

In addition to the tutors, several individuals worked hard to ensure success in the early years: Wyn Thomas, the organiser of the early workshops and the first secretary of the society; the harpist Elonwy Wright (our representative in the south-east); and the president of the society, the late Frances Môn Jones, who gave us wholehearted support on the committee of the Welsh Amateur Music Federation.

cwmni da

yn falch o noddi Clera - Y Dathliad

cynhyrchwyr

Sioe Gelf

S4C nos fercher am 21:30

Cae Llenor
Lon Parc
CAERNARFON
LL55 2HH

Ffôn: 01286 685300
Ffacs: 01286 685301

Sain, cerdd a chân



Trefor Edwards

Goreuon y canwr gwerin
a'r datgeinydd cerdd dant



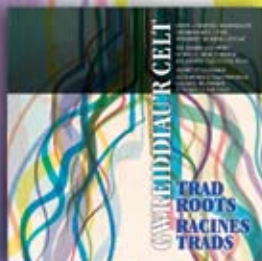
Gwenan Gibbard

Y Gwenith Gwynnaf
Telyn a chanu traddodiadol



Crasdant Dwndwr

Trydydd albwm gwych gan
lysgenhadon canu gwerin



Arfon Gwilym a Chyfeillion

Caneuon gwerin a cherdd dant

Robin Huw Bowen *Hen Aelwyd*

Telyn y Celt & Gwreiddiau'r Celt

Grwpiau gwerin a thelynorion Celtaidd

Carolau Plygain - Llofft Stabal

Casgliad o archifau Sain Ffagan ar un CD

Casgliad Cerdd Dant *Cyfrol 1 & 2*

Ar y Ffin LLYFR

Alawon traddodiadol i'r delyn Geltaidd

Mim Twm Llai *Yr Eira Mawr*

Heather Jones *Enaid*



www.sainwales.com

ffôn 01286 831.111 ffacs 01286 831.497
archeb@sainwales.com

Penblwydd Hapus i Clera
gan



ymlaen â'r gân

TONFEDD-ERYRI CYF.

Hen Ysgol Aberpwell
Y Felinheli
Gwynedd
LL56 4JS

e-bost: swyddfa@tonfedd-eryri.com

fflach:tradd

CERDDORIAETH DRADDODIADOL CYMRAEG
WELSH TRADITIONAL MUSIC



CD NEWYDD - NEW RELEASE

CERI RHYS MATTHEWS - PIPE-CYRN

"PIBDDAWNS"

CD293H

**CASS MEURIG - CERDDORIAETH
DRADDODIADOL AR Y CRWTH**

'CRWTH'

CD272H



**AM GASGLIAD LLAWN FFLACH:TRADD / FOR FULL LIST OF FFLACH:TRADD CDS
AC I BRYNU AR-LEIN / AND TO BUY ON-LINE:**

WWW.FFLACH.CO.UK

fflach

Fflach, Llys-y-Coed, Tenby Road
Aberteifi, Ceredigion, SA43 3AH, Cymru, UK
Phone: +0044 (0) 1239 614 691 E-mail: info@fflach.co.uk

Clera - heddiw

Ein nod yw:

- yn gyffredinol, hybu cerddoriaeth draddodiadol Cymru
- yn benodol, hybu offerynnau traddodiadol Cymru

Rydym yn gwneud hynny:

- trwy drefnu gweithdai mewn gwahanol rannau o'r wlad, lle ceir hyfforddiant ar wahanol offerynnau
- trwy drefnu sesiynau anffurfiol mewn tafarnau a lleoliadau eraill
- trwy bwysu'n gyson ar y cyfryngau i roi sylw teilwng i gerddoriaeth draddodiadol
- trwy annog ein haelodau i gefnogi gweithgareddau tebyg yn eu hardaloedd

Clera - today

Our aims are:

- in general, to promote Welsh traditional music
- in particular, to promote Welsh traditional instruments

We try to do that by:

- organizing workshops in different areas, with expert coaching on different instruments
- organizing informal sessions in pubs and other locations
- lobbying the media to give traditional music its proper place in their programming
- by encouraging members to support similar activities in their areas

Y 'Clerorfa'



Dyma'r tro cyntaf i'r criw sy'n perfformio heno wneud hynny gyda'i gilydd ar yr un llwyfan. Mae'n debyg na fu cymaint â hyn o gerddorion gwerin o Gymru gyda'i gilydd ar un llwyfan erioed! Dros y blynyddoedd diwethaf bu'r rhan fwyaf yn cymryd rhan mewn gweithdai a sesiynau, ac eraill yn perfformio fel unigolion ac mewn grwpiau llai. Heno, daw pawb ynghyd mewn cyngerdd ychydig yn fwy ffurfiol, er mwyn i gynulleidfa ehangach fedru eu gwerthfawrogi. Yn y cyswllt gwerin, efallai nad yw'r gair *cerddorfa* yn briodol. Dyna pam y bathwyd y gair '*Clerorfa*' - fel jôc ar y dechrau, ond yna fe ddechreuodd y gair gydio!

Aelodau'r Glerorfa heno yw/Members of the 'Clerorfa' tonight are:

Ffidlau/Fiddles: Stephen Rees, Huw Roberts, Patrick Rimes, Harri Chambers, Mair Eleri Jones, Arfon Gwilym, Jeff Hughes, Almut Bone, Siwan Evans, Helen Gwent, Gwenno Roberts, Dewi Roberts, Sioned Ann Jones, Gwenno Jones, Lowri Jones, Nia Mai Daniel, Caroline Haywood, Lowri Roberts, Barbara Rich, Geraint Fôn, Bil Efans

Telynau/Harps: Robin Huw Bowen, Rhiain Bebb, Gwenan Gibbard, Keith Floyd, Alaw Ebrill, Llinos Eleri, Anna Georgina Chitty, Mair Dabson, Eleri Mills, Sioned Webb

Ffliwtiau/Flutes: Catrin Meirion, Carrie Rimes, Andy McLauchlin, Jem Hammond, Elin Roberts, Elin Alaw, Kate Browning

Gitâr/Guitar: Paul Airey.

Rhaglen y noson - banner cyntaf

Gair o groeso gan Wyn Thomas

un o sylfaenywyr COTC

Welcome by Wyn Thomas

a founder member of COTC



Set Robin Huw Bowen

Glan Camlad

Llwyn Onn

Rhif Wyth

Gwenan Gibbard

Dod Dy Law, Cainc y Datgeiniad, Y Delyn Newydd

Patrick Rimes (Gerlan) a Harri Chambers (Pentrellyncymer)

Mwynen Merch, Tom Jones, Jig Coeden Dán (Alan Osbourne) a Difyrwrch Gwŷr Bontnewydd

Mair Tomos Ifans, Sioned Webb ac Arfon Gwilym

Helynt Leuven gan Myrddin ap Dafydd ar y gainc Moel yr Wyddfa

Dawnswyr Môn (clocswyr) dan arweiniad John Idris Jones a Mair Jones Heledd Haf, Gwenno Mererid, Mari Gwenllian, Lowri Angharad a Gareth Rhun

Derw Bach Telynorion traddodiadol o Ben Llyn

Anna Georgina Chitty, Mair Dobson, Llinos Eleri ac Alaw Ebrill

Waltz Copenhagen

Ffidlwyr ifanc dan ofal Almut Bone a Mair Jones

Cass Meurig Crwth

Triawd Foeldrehaearn: John, Glandon ac Edfryn Lewis

Cantorion plygain o Sir Drefaldwyn

Clychau Bethlehem, Y Bore Ganwyd Iesu



Set Huw Roberts

Cainc y Medelwr, Y Pawl Haf, Ffidl Ffadl, Cainc Ieuan y Telynor Dall

gyda Dawnswyr Bro Cefni yn dawnsio O Gylch y Fedwen a

Rîl Siôn yr Hetiwr

Sion Gwilym Roberts a Gwen Elin Jones Clocswyr ifanc

Yr ail hanner



Set Jeff Hughes

Y Pibydd Du

Y Lili

Breuddwyd Dafydd Rhys

Melin Llynonn

Mabsant

Jigolo

Bagad o Bibgyrn

Y Crwtyn Llwyd

Robin Huw Bowen a Rhiaian Bebb *Waltz o draddodiad y sipsiwn Cymreig, Fairy Glen*
Côr Telynau *Y Dydd*

Dan Morris

Bwrw Gofal Ymaith/Cast Away Care

Stephen Rees

Cainc yr Aradwr

Andy McLaughlin a Jeremy Hammond

Ffliwtiau
Y Dyn Meddw, Glan Medd'dod Mwyn, Pibddawns Hewl y Felin,
Coleg Prifysgol Abertawe (Pat Shaw), Pibddawns Gwyr Wrecsam

Dyfan Roberts, Robert Edwards ac Arfon Gwilym

Caru Cymru gan Crwys ar y gainc Blaenhafren



Set Stephen Rees

Waltz ar Dreisiwr

Yr Hwch yn yr Haidd

Gig ar Dreisiwr

Dic Sion Dafydd

Dopsi Môn

Y Dydd Cyntaf o Awst

Gellir gweld ac archebu lluniau swyddogol o'r noson o wefan:

www.photoscymru.com

Official photos of the evening can be viewed and purchased on the following website: www.photoscymru.com

SET ROBIN HUW BOWEN

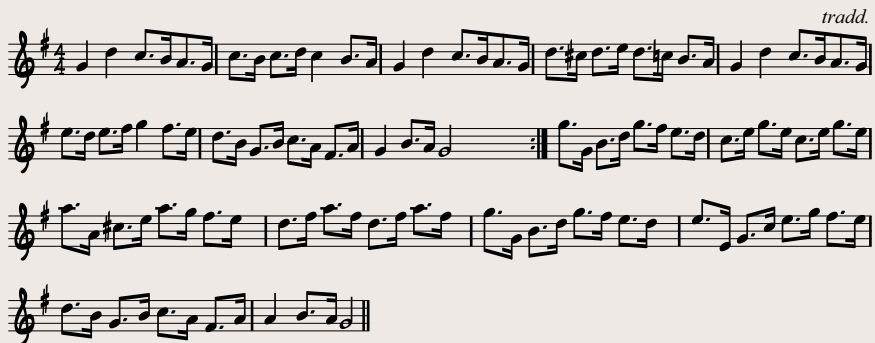
Glan Camlad



Llwyn Onn



Rhif Wyth



Hen bennill ...

Y gŵr a garo grwth a thelyn,
Sain cynganedd, cân ac englyn
A gân y pethau mwyaf tirion
Sy'n y nef ymhlith angylion.

SET HUW ROBERTS

Cainc y Medelwr

tradd.

Three staves of music in G major, 2/4 time. The first staff contains the melody, the second and third staves provide harmonic accompaniment. The piece concludes with a double bar line and repeat dots.

Y Pawl Haf

tradd.

Three staves of music in G major, 2/4 time. The melody is simple and folk-like. The accompaniment consists of chords and rhythmic patterns. The piece ends with a double bar line and repeat dots.

Ffidl Ffadl

tradd.

Two staves of music in G major, 2/4 time. The melody is characterized by a rhythmic pattern of eighth and sixteenth notes. The accompaniment follows a similar rhythmic structure. The piece ends with a double bar line and repeat dots.

Cainc Ieuan y Telynor Dall

tradd.

Three staves of music in G major, 2/4 time. The melody is more complex, featuring many sixteenth notes. The accompaniment is dense with sixteenth-note patterns. The piece ends with a double bar line and repeat dots.

SET JEFF HUGHES

Y Pibydd Du (Hyd y Frwynen)

tradd.

Three staves of music in G major, 2/4 time. The melody is simple and folk-like. The accompaniment consists of chords and rhythmic patterns. The piece ends with a double bar line and repeat dots.

Y Lili

tradd.

Musical score for 'Y Lili' in G major, 2/4 time. It consists of three staves of music. The first staff begins with a treble clef, a key signature of one sharp (F#), and a common time signature. The melody is written in a simple, folk-like style with eighth and quarter notes. The second and third staves continue the melody and include some triplet-like patterns.

Breuddwyd Dafydd Rhys

tradd.

Musical score for 'Breuddwyd Dafydd Rhys' in G major, 3/4 time. It consists of three staves of music. The first staff begins with a treble clef, a key signature of one sharp (F#), and a 3/4 time signature. The melody is written in a simple, folk-like style with quarter and eighth notes. The second and third staves continue the melody and include some triplet-like patterns.

Melin Llynonn

Huw Roberts

Musical score for 'Melin Llynonn' in G major, 6/8 time. It consists of three staves of music. The first staff begins with a treble clef, a key signature of one sharp (F#), and a 6/8 time signature. The melody is written in a simple, folk-like style with quarter and eighth notes. The second and third staves continue the melody and include some triplet-like patterns.

Mabsant

tradd.

Musical score for 'Mabsant' in G major, 2/4 time. It consists of three staves of music. The first staff begins with a treble clef, a key signature of one sharp (F#), and a common time signature. The melody is written in a simple, folk-like style with eighth and quarter notes. The second and third staves continue the melody and include some triplet-like patterns.

Jigolo

Iolo Jones

Musical score for 'Jigolo' in G major, 2/4 time. It consists of three staves of music. The first staff begins with a treble clef, a key signature of one sharp (F#), and a common time signature. The melody is written in a simple, folk-like style with eighth and quarter notes. The second and third staves continue the melody and include some triplet-like patterns.

SET STEPHEN REES

Waltz ar Drensiwr

Stephen Rees

Musical score for 'Waltz ar Drensiwr' in 3/4 time, key of G major. It consists of three staves. The first staff is the melody, the second is the bass line, and the third is a piano accompaniment. The piece features a first ending and a second ending.

Yr Hwch yn yr Haidd

Musical score for 'Yr Hwch yn yr Haidd' in 2/4 time, key of G major. It consists of two staves. The first staff is the melody, and the second is the bass line. The piece features a first ending, a second ending, and a 'tradd.' (traditional) ending.

Gig ar Drensiwr

Musical score for 'Gig ar Drensiwr' in 3/8 time, key of G major. It consists of two staves. The first staff is the melody, and the second is the bass line. The piece is marked 'tradd.' (traditional).

Dic Sion Dafydd

Musical score for 'Dic Sion Dafydd' in 2/4 time, key of G major. It consists of two staves. The first staff is the melody, and the second is the bass line. The piece is marked 'tradd.' (traditional).

Dopsi Môn

tradd. trefn. Stephen Rees

Musical score for 'Dopsi Môn' in 6/8 time, key of G major. It consists of three staves. The first staff is the melody, the second is the bass line, and the third is a piano accompaniment. The piece is marked 'tradd. trefn. Stephen Rees' (traditional, arranged by Stephen Rees).

Y Dydd Cyntaf o Awst

tradd.

Musical score for 'Y Dydd Cyntaf o Awst' in 4/4 time, key of G major. It consists of three staves. The first staff is the melody, the second is the bass line, and the third is a piano accompaniment. The piece is marked 'tradd.' (traditional).

Ydych chi wedi mwynhau'r cyngerdd hwn? Hoffech chi weld mwy o bethau fel hyn?

Os hynny, rydyn ni angen eich cefnogaeth i helpu gyda'r gwaith.

Holwch am ffurflen ymaelodi, neu gwnewch gyfraniad ariannol (mae angen arian arnom drwy'r amser!)

Cofiwch - does dim rhaid i chi fod yn offerynwyr eich hun i gefnogi gwaith y Gymdeithas.

Have you enjoyed this concert? Would you like to see more events of this nature?

If so, we need your support to help with our work.

Please ask for a membership form, or make a financial donation (we always need money!)

Remember - you don't have to play an instrument yourself to support our work.

Hoffech chi ymuno â'n gweithdy nesaf?

Os ydych yn offerynnwr (gwyh neu wachul, does dim ots!) holwch am fanylion ein gweithdai a'n gweithgareddau.

Bydd ein gweithdy nesaf yn Ysgol Tryfan, Bangor ar Ionawr 27, 2007



Would you like to join our next workshop?

If you play an instrument (up to whatever standard), ask for details of our next workshop and other activities.

The next workshop will be in Ysgol Tryfan, Bangor on January 27, 2007

SWYDDOGION

cadeirydd Rhian Bebb, Abercuawg, Trem yr Orsedd, Machynlleth, Powys

ysgrifennydd Arfon Gwilym, Tyddyn Uchaf, Hen Barc, Llanllechid, Gwynedd, LL57 3DU
ffôn: 01248 601030 e-bost: tyddynuchaf@ukonline.co.uk

trysorydd Bethan Roberts, Cartre'r Crythor, 2 Graig Las, Llangefni, Ynys Môn

dyluniwyd gan Eleri Wynne Owen (elериowen@elериowen.plus.com)

argraffwyd gan Design2Print (www.design2print.co.uk)

cynlluniwyd logo'r cyngerdd gan Catrin Meirion (catrincrymi@yahoo.com)